

---

## KIT PART NUMBER 6770000

### INSTRUCTIONS FOR INSTALLING COMPONENTI GRINDERS INTO A 677 WITH DUAL GRINDERS

---

**CHECK THE PARTS RECEIVED IN THIS KIT WITH THE PARTS LIST IN THESE INSTRUCTIONS. IF ANY PARTS ARE MISSING CONTACT THE PLACE OF PURCHASE.**

Read these instructions carefully before installing the kit.  
Keep these instructions for part numbers and for future reference.

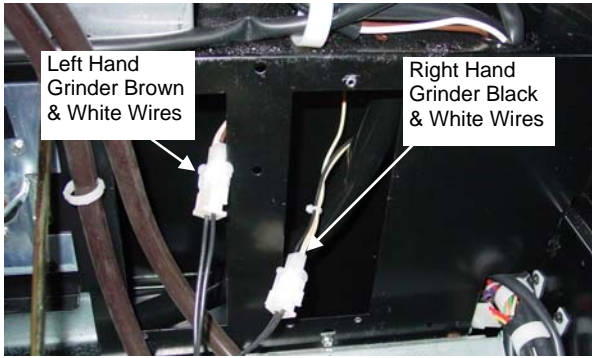
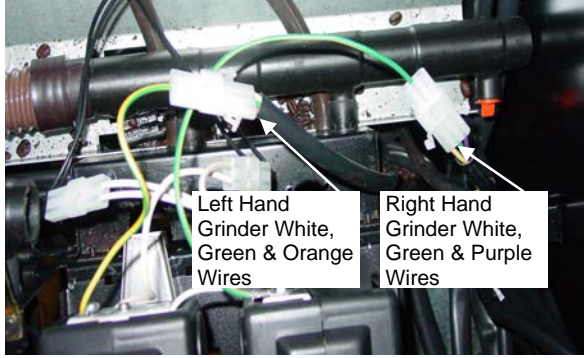
#### THIS KIT CONTAINS THE FOLLOWING:

| PART NUMBER | DESCRIPTION  | QTY |
|-------------|--|-----|
| 6770001     | INSTRUCTIONS COMPONENTI GRINDER CONVERSION (this document) | 1   |
| 6770002     | 944 CAFFORIA GRINDER SUPPLEMENT                            | 1   |
| 9447012     | MOUNTING BRKT MIXING BOWL                                  | 1   |
| 9447011     | HANGER COFFEE HOPPER                                       | 1   |
| 9900081     | NUT #8-32 KEPS ZINC PLATE                                  | 2   |
| 9447009     | HOPPER ASSEMBLY  | 1   |
| 9447014     | GRINDER ASM – COMPONENTI (CONSISTS OF PARTS BELOW)         |     |
| CR0004123   | COFFEE GRINDER – 944 MINI                                  | 2   |
| CR0002861   | BRACKET-GRINDER  | 1   |
| 9449000     | HARNESS MINI GRINDER JUMPER                                | 2   |
| CR0003018   | CHUTE-TOP  | 2   |
| CR0003010   | CHUTE-BOTTOM   | 2   |
| CR0004790   | SCREW –M4.0-0.7 X 8MM                                      | 4   |
| 4312217     | SCREW #8-32 X .50 PHILLIPS-PN HD                           | 8   |
| 3157060     | SCREW #8-32 X .31 HEX W/HD.-TF                             | 2   |

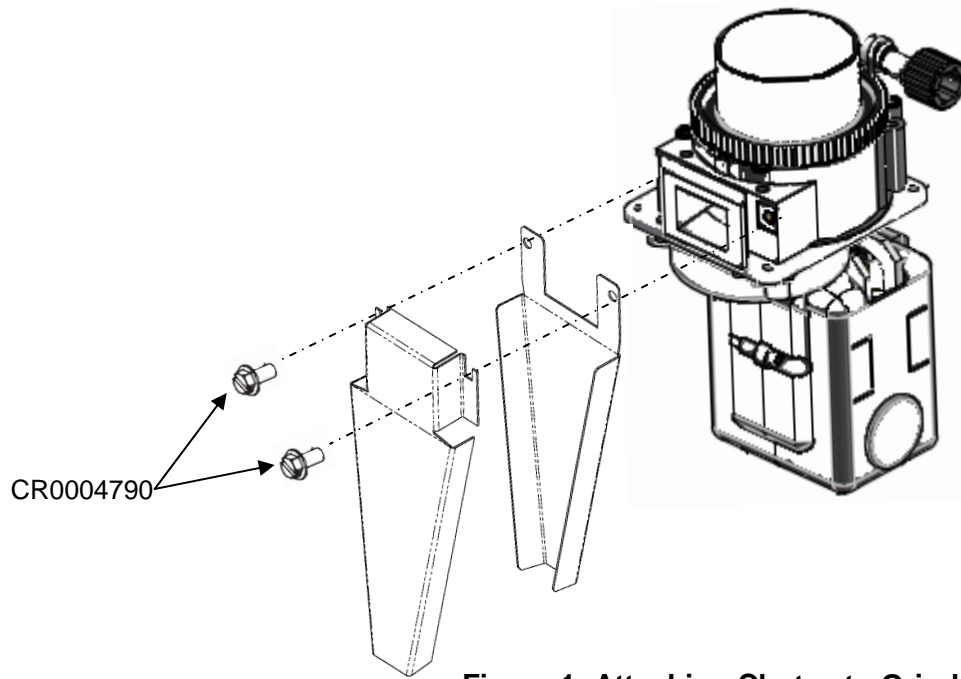
**WARNING! Electrical Shock Hazard – Turn machine off before installing this kit. Failure to do so could result in electrical shock.**

1. Read these instructions carefully before installing this kit.
2. Turn the machine OFF with the main switch. Failure to do so could result in an electrical shock.
3. Remove existing coffee bean canisters.
4. Remove existing coffee grinders.
5. Remove existing bean canister product motors.
6. Remove existing grinder chutes.
7. Remove existing mixing bowl mounting bracket.
8. Install new mixing bowl mounting bracket part #9447012 (Figure 4).
9. Install coffee hopper hanger bracket part #9447011 onto the back wall of the cabinet (Figure 5).

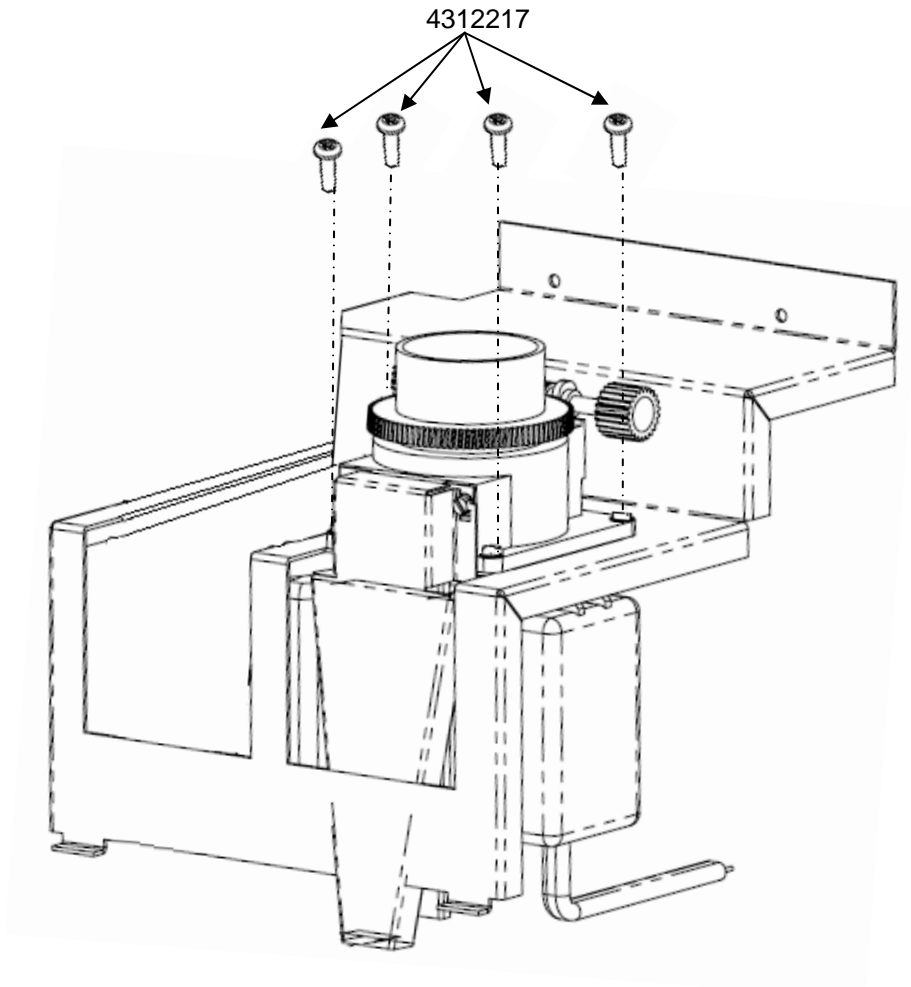
10. If needed follow the instructions below to assemble the new grinder assembly. If not skip to step 11.
  - a. Attach the grinder chutes to the grinders using the 4 screws part # CR0004790 provided (Figure 1). Leave these screws slightly loose at this time.
  - b. Place grinder assembly onto top of grinder bracket, secure grinders into place using the 8 screws part #4312217 provided (Figure 2).
11. Place front tabs of grinder assembly in slots on canister rack as shown in Figure 3.
12. Tilt grinder assembly forward and plug the grinders in. Each grinder has 2 plugs to connect:

| Left Hand Grinder   |  | Right Hand Grinder   |  |
|---|--|--|--|
| 2 wire Plug   | 1 wire plug  | 2 wire plug  | 1 wire plug  |
| Plugs into harness coming from back wall that has the Brown and White wires.  | Plugs into harness white, green and orange wires, located on the right hand side of the front canister rack. | Plugs into harness coming from back wall that has the black and white wires.   | Plugs into harness with white, green and purple wires, located on the right hand side of the front canister shelf. |
| <b>2 Wire Plug</b>  |  | <b>1 Wire Plug</b>   |  |
|  <p>Left Hand Grinder Brown &amp; White Wires</p> <p>Right Hand Grinder Black &amp; White Wires</p> |  |  <p>Left Hand Grinder White, Green &amp; Orange Wires</p> <p>Right Hand Grinder White, Green &amp; Purple Wires</p> |  |

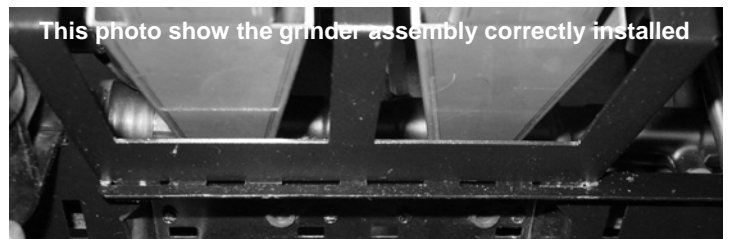
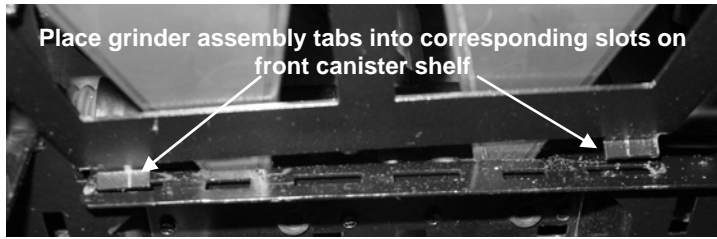
13. Tilt grinder assembly back into position. It may be necessary to manually align the grinder chutes into the proper position. The grinder chutes need to fit through the 2 holes in the mixing bowl mounting bracket (Figure 4).
14. Secure assembly to back of machine with the 2 screws removed in step 5D or with the 2 screws provided.
15. Tighten screws holding grinder chutes.
16. Place coffee bean hopper onto grinders; make sure the lip on the hopper is secured behind the bracket on the back wall of the machine. Transfer beans from old canister to new hopper.
17. Open bean hopper sliding gates.
18. Turn power on and test vend the coffee selections & re-gram coffee throws as required.



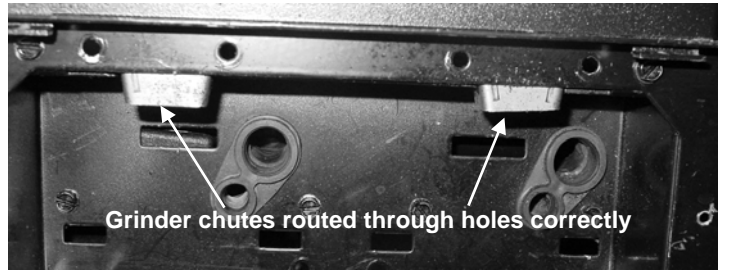
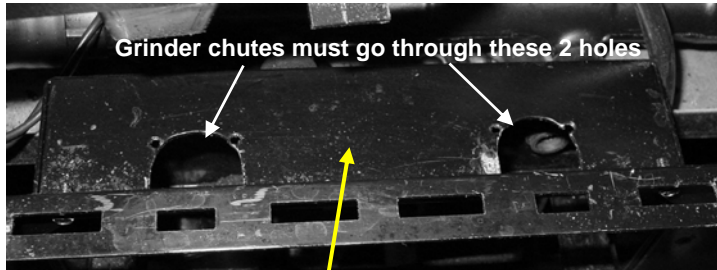
**Figure 1: Attaching Chutes to Grinder**



**Figure 2: Securing grinders to bracket**



**Figure 3:**



**Figure 4:**

Replace with P/N 9447012 Mounting Bracket Mixing Bowl.



Install P/N 9447011 hanger coffee hopper and P/N 9900081 SCREW #8-32X.31 HEX for hopper assembly support.

